



FOREST OF DEAN & WYE VALLEY

VISITOR GUIDE

2020/21



#FindYourFreedom

#DeanWye



SEVERN & WYE

THE BARN

FISH MARKET
CAFÉ / RESTAURANT
FOOD HALL
GIFTS

*Come and experience Gloucestershire's
No1 foodie destination*



SEVERN & WYE, CHAXHILL, WESTBURY-ON-SEVERN, GLOUCESTERSHIRE GL14 1QW

www.severnandwye.co.uk 01452 760191

A WARM WELCOME

20 million trees, one of the UK's last ancient forests, a dramatic river valley, rolling hills and breathtaking viewpoints - the Forest of Dean and Wye Valley is an area full of hidden gems and striking beauty.

We've got outdoor adventures galore, unique attractions and activities, more castles than anywhere in the UK, a rich heritage, delicious local produce and a wealth of places to stay. Whether you come for the trees, the rivers, the culture, the fun, the miles of footpaths or cycle tracks or just to find your freedom in our little slice of paradise, we look forward to welcoming you here soon.

- 05 **WALKING**
- 07 **CYCLING**
- 11 **THINGS TO DO**
- 22 **MAP**
- 26 **ART & CRAFT**
- 28 **FOOD & DRINK**
- 30 **NATURE**
- 32 **FILM & TV**
- 34 **HISTORY**
- 35 **FESTIVALS**
- 36 **STAY**
- 42 **VOUCHERS**



@VisitDeanWye



Wye Valley Butterfly Zoo



aMazing
Hedge Puzzle

Looking for fun
Share the joy
with everyone

Open daily
from 10am

Laser Tag



Miniature
Golf



Check out our online offers at
butterflyzoo.co.uk

Follow us [facebook](#) [twitter](#)

📍 Symonds Yat West HR9 6DA ☎ 01600 890360

Safe, secure, metered parking



A WALK OF DiSCOVERY

Walking is a perfect way to explore the area and is one of the most popular activities.

You will find many routes, including '12 Easy Walks' at visitdeanwye.co.uk. Why not try a few?

CIRCULAR AND LINEAR SHORT WALKS

Riverside or Forest, hills or valleys, we've got walks with pubs, walks with sculptures and walks with stunning viewpoints including the Sculpture Trail, Penallt Pubs Circular, Darkhill Iron Works Walk, Daffodil Way and the Poets Path.

LONG DISTANCE

For lengthier options there are several long distance trails such as Offa's Dyke National Trail, Wysis Way, Gloucestershire Way and the Wye Valley Walk all with stunning scenery and amazing viewpoints such as Devil's Pulpit, Eagle's Nest, Wintour's Leap and Lover's Leap.

DOG-FRIENDLY

The Forest of Dean and Wye Valley offers miles of countryside for you and your four-legged friend. Pick one of many traffic-free walking routes from gentle strolls to all-day hikes.

EASY ACCESS

For a gentle introduction to the Forest, or if you have a wheelchair or pushchair there are routes at Mallards Pike Lake and the Cyril Hart Arboretum. Mobility scooters available for hire: visitdeanwye.co.uk/mobility_scooters

PHOTOWALKING

Walking in nature can help to focus your thoughts and increase your creativity. Photowalking is a new trend to combine the activities of walking in nature and photography and is now available from The Forest of Dean & Wye Valley School of Photography.

pedal
aBike
Away

BIKE HIRE

IN THE BEAUTIFUL FOREST OF DEAN

11 MILE
TRAFFIC-
FREE FAMILY
CYCLE
TRAIL

IT'S THE
PERFECT
FAMILY
DAY OUT!

CAFÉ
TOILETS
AND
SHOWERS

SINGLE
TRACK
MOUNTAIN
BIKE
ROUTES

INSIDE
& OUTSIDE
EATING
AREAS

HIRE
BIKES TO
SUIT
EVERYONE

HIRE A BIKE AT PEDALABIKEAWAY.CO.UK/BIKE HIRE



ADRENALINE ADVENTURE

For off-road enthusiasts your adventure begins right here in the saddle!

The area is renowned for its steep, slippery, rooty descents with a massive range of styles and features. From the Sheepskull with its bombholes and rutted sections, to the huge drops and jumps on GBU (Good, Bad and Ugly) – you will have an awesome day on our trails.

The downhill tracks are 3-4 minutes, but you will manage a huge number of runs whether you are riding the uplift or pushing/riding up and sessioning sections. A number of “Enduro” lines are popping up right across the hill and will have all the long travel riders grinning from ear to ear. They are hard to find but well worth the effort.

There are a number of routes for the experienced down hill riders with names like Ski Run, Corkscrew and The Good The Bad and The Ugly - you get the idea! There is also a choice of two skills loops to help you develop your off-road cycling skills.

Guided mountain biking and training is also available to help you make the most of the area’s best trails.

Road riders can look forward to winding country lanes and short hill climbs.

CAFE - CYCLE HIRE - BIKE SHOP



FAMILY CYCLE HIRE CENTRE



WWW.DEANFORESTCYCLES.CO.UK - TEL: 01594 368009

DEAN FOREST CYCLES, WHITECROFT ROAD, PARKEND, GL15 4HG



FAMILY EXPLORATION

The Family Cycle Trail is a great way to see the Forest. A waymarked circular route mainly on former railway lines with connecting routes to villages and picnic sites.

The Family Cycle Trail is an 11 mile circuit with links to Forest towns and villages. It's a gravelled track that is suitable for riding all year round.

Perfect for a family ride full of fun, it has bumps and features for the more independent children to explore.

It starts in the Cannop Valley from Pedalabikeaway and takes you along the old Severn and Wye railway line passing former stations at Drybrook Road, Cannop Wharf and Speech House. Remnants of former coal mines can be seen at Foxes Bridge, Lightmoor and New Fancy.

Why not download the Hidden Heritage App which as you ride along the cycle path uses the GPS to tell you what is on the route. It shows pictures of the location as it is today and as it was many years ago when the mines were working and the railway was still running.

If you don't have your own bike, they can be hired from Pedalabikeaway Cycle Centre or Dean Forest Cycles.



Puzzlewood

A Magical Woodland in the Forest of Dean

Popular
TV & Film
Location



Explore the mysterious beauty

Relax in the café and picnic area

Meet our farm animals

Have fun in the mazes and play area

Stay in one of our cottages



www.puzzlewood.net



FREE
PUZZLEWOOD APP

MEMORY MAKERS



LOSE YOURSELF

Switch off your satnav and get lost, it will lead to all kinds of fun. Enjoy wandering through the ancient paths and mossy rocks in Puzzlewood, or find the surprise at the centre of Elton's Giant Maze (open May-Sept.), or try the aMazing Hedge Puzzle.

OUTDOOR ADVENTURE

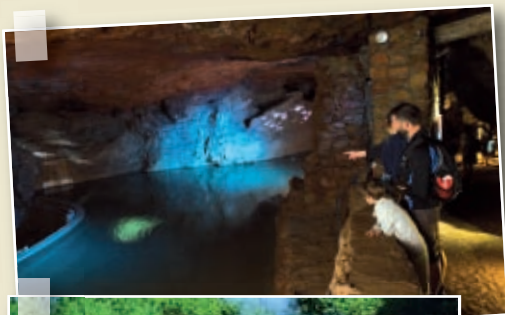
For those seeking adventure there are lots of must-do activities on offer. Borderlands Outdoor and Forest Adventure offer rock climbing, abseiling, caving and more. Perfect for an exciting day in the great outdoors.

HOLE IN ONE

Forest Hills features a challenging par-72 course set in beautiful surroundings. For a few hours of family, golfing fun, a 12 hole roman ruin fantasy is set in spectacular scenery at Wye Valley Miniature Golf. The course has wheelchair access and short putters so even toddlers can play.

UNDERGROUND TOURS

Strap on a helmet at Hopewell Colliery and follow an experienced miner underground, as you navigate a route through a section of miles of tunnels dug out since the 1820s. Explore the depths of Clearwell Caves, a vast underground labyrinth of passageways, caverns and rock faces, home to mysterious minerals, flora and fauna. Fantastic for families and not to be missed.



ON THE RIGHT TRACK

Experience the Forest at a slower pace all aboard a Perrygrove Railway steam train. For a fun family day out visit the Dean Forest Railway, which stops at five points so passengers can enjoy a woodland walk or a hearty pub meal. Or travel through more than 26 miles of spectacular scenery on a GWSR steam or heritage diesel train.



CLEARWELL CAVES

DISCOVER THE WONDER

OF UNDER

Underneath the Forest of Dean lies an unfathomable natural cave system that has been mined for more than 4,500 years, but still hides a whole world of secrets.



**9 AWESOME
CAVERNS**




**THE LAMPROOM
CAFÉ**



**UNIQUE GIFT
SHOP**



**OUTDOOR PLAY
AREA**

 **01594 832535**  **clearwellcaves.co.uk**



DISCOVER YOUR INNER TARZAN

With over 20 million trees in the Forest, Go Ape and Forest of Dean Adventure are both set in the perfect location. Fuel an appetite for adventure as you climb, swing and fly your way around the high ropes courses. There is also a purpose-designed course at Go Ape! for the smaller monkeys.

RELAX AND FLOAT AWAY

If you are in need of some relaxation, Float in the Forest have the perfect solution to relax all your muscles and get rid of that tension “a place you can truly rest, a time which is yours alone”.

BRAVE THE CAVES

Clearwell Caves offers caving experiences that allow you to join a group that explores beyond the public pathways to visit labyrinthine workings created by mining. But be warned, these trips do involve tight bits, scrambling and getting dirty. They are an exhilarating experience, for those seeking an adventure and excitement.

SURVIVE THE WILDS

Learn the skill of bushcraft, where you can gain valuable survival techniques and how to thrive in the great outdoors. Bushcraft skills include firecraft, tracking, hunting, fishing, shelter building and foraging.

MAKE FLYING FRIENDS

Walk with butterflies fluttering all around you from different parts of the world at Wye Valley Butterfly Zoo. Or watch amazing flying demonstrations at The International Centre for Birds of Prey, which houses over 200 birds of prey, eagles, owls, vultures, kites, buzzards and falcons. There are three different demonstrations each day.



A TRIP TO THE CINEMA

Catch a movie at The Gateway, an independant cinema situated at Labels Shopping, Ross-on-Wye. With a diverse programme of entertainment, including live and sensory screenings, luxury seating and fully licenced bar serving a selection of beverages and delicious dishes.

A photograph of a steam locomotive, number 5541, pulling a train through a lush green forest. The locomotive is dark green with a red front buffer. It is emitting a large plume of white steam from its chimney. The train consists of several passenger coaches and a red freight car. The background is filled with tall, leafy trees under a blue sky with some clouds.

Dean Forest Railway

**Steam Train Journeys
most Wednesdays & Weekends**

Cream Teas*

Evening Dining Trains*

Murder Mysteries*

Plus many more special events!

***Online booking required**

01594 845840 | www.deanforestrailway.co.uk | contact@deanforestrailway.co.uk



TAKE AIm

Try your hand at clay pigeon shooting, air rifle or archery. At DBC, there are options for tuition or to simply book and have a go, with the beautiful scenery on offer, you won't be disappointed. Forest of Dean Adventure and Borderlands Outdoor offer taster archery sessions, suitable from age six years - perfect for families looking for fun.



ADRENALINE RUSH

Get behind the wheel for some adrenaline-packed adventure, head off-road driving in a quarry at Whitecliff Off Road Driving Centre's purpose-built 40 acre off-road site. With its variety of surfaces, it is deemed one of the best in the UK.



SADDLE UP

Discover the beautiful scenery from a different perspective. Explore miles of quiet, picturesque bridleways on horseback with a trek or hack from Greenacres Stables. All abilities can enjoy a lesson or expedition on a range of ponies and horses for individuals or the entire family.

RETAIL THERAPY

For those who enjoy a spot of shopping, you will find a variety of independent shops throughout the market towns and picturesque villages. At Labels Outlet in Ross-on-Wye you will find a wide range of big name stores. Enjoy lunch in their café which is supplied with produce from their very own farm.

Taurus Crafts brings together a wide range of businesses that specialise in everything from local jewellery and stained glass to craft ales and artisan food.

Visit Severn & Wye Smokery's new Chef's Larder and fresh fish counter for an extensive array of fresh and delectable local foods.



PERRYGROVE
TREEHOUSES
TRAINS & TREASURE

Discover a world of treehouses and treasure hidden in the trees on the edge of the Forest of Dean. Armed with a key, clues and a whole day of fun ahead, explore the whole of Perrygrove to unlock your box of treasure!

EVENTS 2020
BIGJIGS PLAY DAYS –
18TH - 19TH FEB,
26TH - 28TH MAY &
27TH - 29TH OCT
TEDDY BEARS PICNIC – 10TH MAY
HALLOWEEN FREE – OCTOBER
CHRISTMAS AT PERRYGROVE
– DECEMBER

TEL: 01594 834991 • WWW.PERRYGROVE.CO.UK
PERRYGROVE RAILWAY, PERRYGROVE ROAD, GLOUCESTER GL16 8QB

01594 834991
Perrygrove Railway
TICKET
All you need is fun!
FIRST CLASS
01594 834991



FEEL 50 FT TALL

Go from feeling on edge, to the edge of awesome. Feel 50ft tall at Go Ape Forest of Dean.

@GoapeT1be #Feel50ftTall

GO APE

Featuring: Treetop Challenge, Treetop Adventure and Forest Segway

goape.co.uk

GET CREATIVE

If you are feeling inspired you can make your own artistic creation to take home. Eastnor Pottery offers introductions to basic hand-building and wheel-throwing techniques while Taurus Crafts regularly host courses on pottery, painting, jewellery making and sculpture.



LEARN TO COOK

From cookery basics to artisan bread, pasta or cake making, Harts Barn Cookery School is the place for foodies who enjoy to cook as much as eat. It's a fun, affordable experience that leaves all ages with the confidence to create great grub.



WILDLIFE WORD SEARCH

Lots of animals live in the Forest of Dean and Wye Valley, see if you can find: peregrine falcon, long horn cattle, deer, exmoor pony, pine marten, beaver, sheep, highland cow, wild boar, otter

E	B	D	G	C	L	M	G	D	B	Z	X	M	D	O
T	J	D	P	Y	N	O	P	R	O	O	M	X	E	K
N	O	C	L	A	F	E	N	I	R	G	E	R	E	P
R	R	O	B	D	I	I	W	W	G	Q	P	L	R	I
G	E	W	O	C	D	N	A	L	H	G	I	H	W	P
N	P	U	P	Z	K	O	Y	S	H	R	E	A	N	R
Q	S	Y	H	K	Q	H	T	T	H	S	R	P	C	A
S	B	R	S	N	E	T	R	A	M	E	N	I	P	O
U	N	R	E	M	T	O	N	D	A	W	E	A	J	B
M	V	U	G	V	K	O	P	H	S	B	B	P	W	D
K	E	L	T	T	A	C	N	R	O	H	G	N	O	L
G	V	M	R	E	V	E	E	B	E	B	O	J	T	I
R	E	E	H	S	U	Y	B	Q	N	N	C	M	T	W
X	P	L	P	R	O	H	E	R	A	Z	I	W	E	Q
P	B	F	H	R	R	D	E	E	D	S	T	C	R	K



THE DEAN HERITAGE CENTRE

History, heritage and fun rolled into one!

- 5 THEMED MUSEUM GALLERIES
- VICTORIAN SCHOOLROOM
- CHARCOAL BURNER'S CAMP & FREEMINE
- WATERWHEEL & BEAM ENGINE
- FORESTER'S COTTAGE
- GIFT SHOP & COFFEE SHOP
- CARVED GRUFFALO TRAIL
- WOODLAND PLAYGROUND



EVENTS 2020

HALF Term Fun **17-21 February**
 Easter in the Forest **6-17 April**
 Fire & Wood Festival **8-10 May**
 Spring Into the Forest **25-29 May**
 Summer Forest Adventures
20 July—28 August
 Opera Anywhere **2nd August**
 Pumpkin Festival **26-30 October**
 A Very Traditional Christmas
12&13, 19-23 December
 Check our website for full details of these family friendly events and more.

WWW.DEANHERITAGECENTRE.COM 01594 822170 info@deanheritagecentre.com



Open:
10.30am - 6pm
Mid July - Mid Sept.
See website for dates



- 3 Themed Giant Maize Mazes covering 12 acres with Look Out Towers & Trivia Quiz
- An Activity Maze with Obstacles, Motion Sensors & Water Squirt Quiz Boxes
- Courtyard Games, Picnic Site, Snacks
- Maize Mazes are Dog Friendly

www.eltonmazes.co.uk
Tel: 01594 827007
 Elton Farm, Newnham-on-Severn, West Glos. GL14 1JU
[See website for special events](#)

Archery • Bushcraft • Caving • Climbing • Navigation Training



Adventures in the Borderlands...






07539 896 556 07580 135 869
info@borderlandsoutdoor.co.uk

2020 Monmouth Archery Sessions :

13th April	8th May	25th May
21st July	13th August	31st August

Usual price £20 per person: booking essential
 Suitable for aged 6+ (spectators welcome)

10% Discount Use code: WVFO www.borderlandsoutdoor.co.uk



SHOPPING • DINING • ENTERTAINMENT

LABELS SHOPPING

Find us: Ross on Wye, Herefordshire, Sat Nav HR9 7QQ
www.labelsshopping.co.uk | 01989 769 000

[@LabelsOutlet](#) [@LabelsShopping](#)



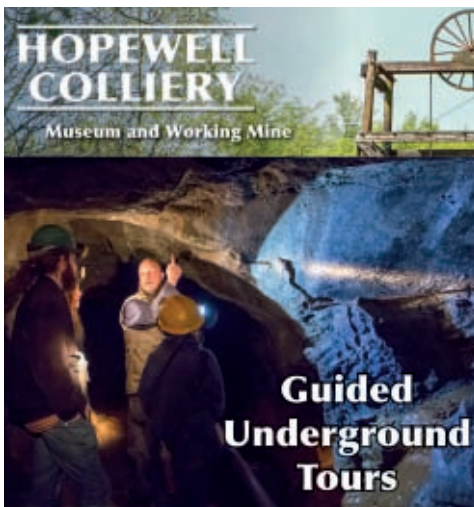
THE GATEWAY

CINEMA | EVENTS | FOOD & DRINK

Located on the upper ground floor of Labels Shopping,
 Ross on Wye, Herefordshire, HR9 7US | M50/J4

[@gatewayross](#) [@The_Gateway2018](#)

BOOK TICKETS AT WWW.THEGATEWAYCINEMA.CO.UK



HOPEWELL COLLIERY

Museum and Working Mine

**Guided
Underground
Tours**

Speech House Road, Coleford GL16 7EL
 T: 01594 810706 / 07717 750689 (out of hours)

E: contact@hopewellcolliery.com

www.hopewellcolliery.com

Open to the public Easter - September
 (pre-arranged groups all year round)



FLOAT in the FOREST
 Floatation centre

Enjoy total relaxation

floatintheforest.co.uk
relax@floatintheforest.co.uk
 01594 715215





WYE ADVENTURES
www.wyeadventures.com

ADVENTURE EXPERTS

Wye Adventures - professional and friendly
Canoe & Kayak Hire, Guided River Trips,
Expert Tuition and Courses on the River Wye.

Our range of activities and multi-activity adventures
include Stand-Up Paddle Boarding, Bushcraft,
Gorge Scrambling, Archery, Climbing and Abseiling,
Orienteering, Axe Throwing and Barrel Rafting!

BRITISH CANOEING
QUALITY MARK

T: 01600 890027

BOOK ONLINE

wyeadventures.com

FOREST ADVENTURE LTD

Coleford GL16 8EX T: 01594 835116 / 07712833537

E: info@forestadventure.co.uk

www.forestadventure.co.uk

Archery - Abseiling - Bushcraft
Canoeing/Canoe Bivouac - Caving
Climbing - George walking - Problem solving
Raft building - Team building and more



INTERNATIONAL CENTRE FOR BIRDS OF PREY

Newent GL18 1JJ T: 01531 820286

E: info@icbp.org

www.icbp.org

Enjoy the world's oldest bird of prey centre - home to over 200 birds! The perfect day out with 3 flying demonstrations a day, on site cafe and beautiful grounds to explore or have a picnic. With everything from little owls to Steller's sea eagles there's something for the whole family!



#FindYourFreedom



Gloucestershire Warwickshire Railway

The Friendly Line in the Cotswolds

It's a Great Family Day Out!

Book tickets online at www.gwsr.com

Travel from Broadway, Toddington, Winchcombe or Cheltenham Race Course stations on our award-winning heritage railway. 28 mile round trip through glorious scenery. Tea room, shop, heritage trail and small museum at Toddington; café, shop, discovery coach and picnic area at Winchcombe. Buffets on most trains.

GWR

Famous 15 arch viaduct at Stanway. 693 yard Greet tunnel. Heritage steam engines, diesel locomotives and railcars.

The Railway Station, Toddington GL54 5DT (01242) 621405

GOODRICH CASTLE

Ross on Wye, Herefordshire HR9 6HY

T: 01600 890538

www.english-heritage.org.uk/goodrich

Dramatically set on a rocky outcrop with exhilarating views over the Wye Valley, Goodrich Castle offers a fascinating insight into medieval castle life.

See the website for opening times, prices & event information.



KINGFISHER CRUISES

Symonds Yat EAST HR9 6JL T/F: 01432 267862
 M: 07831 297672 E: rivertrip@supanet.com
www.wyenot.com

Symonds Yat is world famous as part of the historic Wye. Tour enjoyed by romantics of the C18th. Full commentary telling of the natural beauty and history of the area is provided. Evening trips for parties by prior arrangement. One paying child - one child free. Telephone for times.

**FOREST HILLS GOLF CLUB**

Mile End Road, Coleford GL16 7QD T: 01594 810620
 E: enquiries@foresthillsgolfclub.co.uk
www.foresthillsgolfclub.co.uk

Championship Golf Course & Range: Visitors are welcome, equipment can be hired, the driving range is just across the road.

Coffee Lounge overlooking the Course: Upstairs all are welcome to enjoy our coffee lounge with home-made cake or lunch. Our balcony has views overlooking the Golf Course.

**DBC LEISURE**

St Briavels, Lydney GL15 6QP T: 01594 833940
 M: 07850 969169 E: info@dbcleisure.co.uk
www.dbcleisure.co.uk

Clayshooting • Air Rifle Target Shooting • Archery • Tuition
 Multi-Activities • Corporate/Private • Birthday Parties
 • Hen/Stag Parties • On Site Catering • Young Shot Friendly

**GREENACRES STABLES RIDING CENTRE**

Lea, nr. Ross-on-Wye HR9 7JZ T: 01989 750781
 E: info@greenacresstables.co.uk
www.greenacresstables.co.uk

Tailored riding lessons, off-road treks, pony camps and various activities, for beginners and experienced riders of all ages. Our friendly horses and ponies will take you along country lanes and forest tracks to enjoy the beautiful scenery and spectacular views. Open all year. Mon-Sun 9am - 6pm.

**WHITECLIFF OFF ROAD DRIVING CENTRE**

Whitecliff Quarry, Coleford GL16 8NB T: 01594 834666
 M: 07720 734192 E: info@whitecliff4x4.co.uk
www.whitecliff4x4.co.uk

Half & Full Day 4x4 Off Road • Driving Courses
 Professional 4x4 Driver Training • Gift Experience Vouchers
 1:1 Owner Driver Courses • Junior Off-Road Experiences
 Parent & Junior Off-Road Experiences

NB: All Courses Must Be Pre-Booked

Vehicles Used: Land Rover Defender SWB & Discoverys One & Two.

**MONMOUTH CANOE & ACTIVITY CENTRE**

Monmouth NP25 3DP T: 01600 716083
 E: info@monmouthcanoe.co.uk
www.monmouthcanoe.co.uk

Families, Adult Groups incl. Stag/Hen, Corporate, School/ Youth Groups. Other Activities - Rockclimbing, Abseiling and Raftbuilding. AALA Licensed BCU Approved

FOD & WYE SCHOOL OF PHOTOGRAPHY

St Briavels GL15 6TL T: 07771 664973
 E: info@davidbroadbent.com
www.davidbroadbent.com

Photography Skills Courses with professional photographer and tutor David Broadbent. Fun, fresh air training catering for all abilities and equipment. Gift vouchers available.





Visitor INFORMATION

Close to Birmingham and Bristol, straddling the England Wales border a delightful area waiting to be explored that covers parts of Gloucestershire, Herefordshire and Monmouthshire.

Located within easy access of the M4 (M48), M5 and M50 motorways.

National Express operates nationwide coach services to Newent, Chepstow, Gloucester, Ross-on-Wye and Monmouth. www.nationalexpress.co.uk

TRAVEL DISTANCES

To/From	Miles/KM	Drive Time
Birmingham	76/122	1 1/2hrs
Bristol	33/54	1hr
Cardiff	43/70	1hr
Liverpool	168/271	3hrs
London	140/226	3hrs
Manchester	156/252	3hrs

BY TRAIN

Closest railway stations: Lydney, Chepstow, Ledbury, Abergavenny and Gloucester. www.nationalrail.co.uk

BY AIR

Bristol: www.bristolairport.co.uk
 Cardiff: www.cardiff-airport.com
 Birmingham: www.bhx.co.uk

FORESTRY ENGLAND SITES

Beechenhurst	GL16 7EG	
Mallards Pike	GL15 4HD	
Symonds Yat Rock	GL16 7NY	
Wenchford	GL15 4DG	
Cannop Ponds	GL16 7EG	
Soudley Ponds	GL14 2UB	



Contains OS data © Crown Copyright (2020)
 and © OpenStreetMap contributors data (2020)
 Produced by www.themappingcompany.co.uk

Canoe the Wye



Canoe hire on the River Wye

Canoeing in the Wye Valley is a favourite activity for those who love the outdoors. Ideal for families on holiday, people seeking a challenge or groups wanting to do something together. It is a great and healthy way to enjoy your free time.



enquiries@canoethewye.co.uk

01600 891100

www.canoethewye.co.uk



TAKE TO THE WATER

The River Wye is one of the most scenic places in the UK and an ideal setting for outdoor adventure. Experience exciting rapids or a gentle paddle, there is something to suit everyone.

Canoe the Wye, Monmouth Canoe Hire and Wye Canoes offer a variety of river activities to suit all tastes. If one day isn't enough, spend a longer break surrounded by beautiful landscapes, canoe during the day and camp next to the Wye overnight, perfect for leaving those every day stresses and worries behind.

Try your hand at stand-up paddleboarding. Wye Canoes have a little beach right next to their access point at Symonds Yat West, perfect for SUP.

Take a river cruise with Kingfisher Cruises. Look out for jumping trout, kingfishers, mink and swans as you sit back, relax and let the towering, limestone gorge scenery drift by.

Stop off for lunch at river side eateries, such as The Saracens Head Inn, serving delicious local food and drink.

THE SEVERN BORE is a spectacular natural phenomena, this tidal wave is the second highest in the world! There are a number of viewing points along the river, and there is even the opportunity to surf!

taurus crafts
 Craft studios - Artisan businesses
 Cafe - Local food & drink - Gift shop
 Local art - Special events - Markets

camphill village trust
 TAURUS CRAFTS

Registered charity 223402



Part of Camphill Village Trust:
 supporting people with learning disabilities to lead a life of opportunity.
tauruscrafts.co.uk 01594 844841
 Lydney, Forest of Dean, GL15 6BU

A LIFE OF OPPORTUNITY
 EST. 1954

MARY ROSE YOUNG'S POTTERY & GALLERY
 The Forest of Dean artist whose pieces sell around the world, famous for her "Alice in Wonderland" style.
 Pop in and browse or even "Paint a Plate" for £30

Open Mon-Fri 9am-5pm
 Oak House, Parkend,
 Lydney, GL15 4JQ
 01595 563425
www.maryroseyoung.com



NATURE IN ART

Twigworth, Glos. GL2 9PA T: 01452 731422

E: enquiries@natureinart.org.uk

www.natureinart.org.uk

MUSEUM DEDICATED TO ART INSPIRED BY NATURE

Artwork and objects in all mediums and styles from around the world, spanning 1500 years.



HOT POT POTTERY

Christchurch GL16 7NS T: 01594 837943

E: info@hotpotpottery.co.uk www.hotpotpottery.co.uk

A cosy, country pottery offering pottery classes/activities (booking essential):

- POTTERY PAINTING - get creative with help & advice
- POTTERY TRIAL CLASSES - 2-2.5 hours, 3 techniques
- WHEEL THROWING - 1 day, own wheel

Group meals, parties and celebrations also bookable.

Special events throughout the year.



WOBAGE MAKERS GALLERY

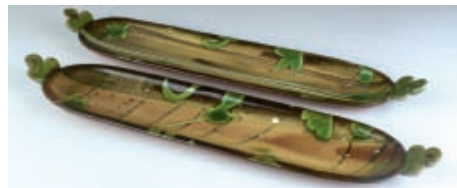
Upton Bishop, Ross on Wye, Herefordshire HR9 7QP

T: 01989 780495

www.wobage.co.uk

Wobage makers Gallery exhibits the work of eight resident craft makers. A wide range of items in furniture, pottery, jewellery and baskets are on display in the gallery space.

Open: 10am to 5pm every Thurs, Fri and Sat
 (closed Jan and Feb)





The Forest of Dean and Wye Valley is considered by many as every artist's dream.

NATURE'S INFLUENCE

Fantastic public art can be found along the Forest of Dean Sculpture Trail, while the annual Forest & Valley Open Studios event lets visitors take a peek inside some of the most creative spaces in the UK.

All this and dozens of charming galleries, luscious gardens and arts centres tucked away in hamlets, towns, and villages.

Some stunning pieces of pottery can be acquired in the area, with numerous local studios, inspired by the beauty of the surrounding nature. Be inspired at Nature in Art, admire at Wobage Makers Gallery or get stuck-in throwing a pot at Hot Pot Pottery. Visit the unique Mary Rose Young

Pottery, with its 'Paint Your Own Plate' point, where you can utilise the 'Mary Rose Technique' that produces such vivid colours.

Taurus Crafts features a diverse variety of small artisan businesses most of whom make and sell from their workshops. There are regular courses and events for those wanting a more "hands-on" experience.

The area offers the perfect location for any keen photographer. Improve your camera skills with Master Photographer, David Broadbent, at Forest of Dean School of Photography.

APPLE COUNTY CIDER

Newcastle, Mon. NP25 5NS T: 01600 750835
ben@applecountycider.co.uk
www.applecountycider.co.uk

Visit the home of our award-winning cider made from our orchards on lush, rolling Monmouthshire hills. Enjoy an orchard walk, bring a picnic followed by cider tasting. Take home cider and local produce from the shop. Discover the timeless joy of distinguished real cider.



TY GWYN CIDER

Pontrilas HR2 0DL T: 01981 241181
E:alex@tygwyncider.co.uk
www.tygwyncider.co.uk

Rustic farm cider shop just off the main A465 road between Abergavenny and Hereford. Free tastings of our award winning ciders (and a perry) to all visitors. Enjoy a cider on our sun deck whilst taking in the amazing views and wildlife. Open: Wed to Sat 1000-1800. Sun 1100-1700.



HARTS BARN COOKERY SCHOOL

Longhope GL17 0QD T: 01452 831719
E: info@hartsbarncookeryschool.co.uk
www.hartsbarncookeryschool.co.uk

Do you love food? Then you'll love Harts Barn Cookery School. Stunning location with a variety of cookery experiences for groups, parties, families and friends, including: cookery classes, venue hire, hire a chef, holiday activities, supper clubs, party packages and corporate days.



SILVER CIRCLE DISTILLERY

Catbrook NP16 6UL T: 01600 860702
E:hello@silvercircledistillery.com
www.silvercircledistillery.com

Micro distillery set in stunning countryside near Tintern. We offer 'Distil your own gin' experiences, cocktail masterclasses, distillery tours and tastings. Visit our tasting room / café or buy a bottle of Wye Valley Gin direct from the producers at our distillery shop.



THE RED HART INN

Blaisdon GL17 0AH T: 01452 830477
E: redhartinn@yahoo.co.uk
www.redhartinn.co.uk

Family owned, C16th traditional country pub. Large beer garden and children's play area. Locally sourced, seasonal menu showcasing our award winning food and drink.

PARVA FARM VINEYARD

Tintern, Chepstow NP16 6SQ T: 01291 689636
E: parvafarm@hotmail.com
www.parvafarm.com

Family run, forty year old vineyard. Beautiful location above the River Wye. Award winning wines, mead and gift shop for wine sales and free tastings.

GLOUCESTER SERVICES
 Farmshop & Kitchen

*If it feels different here,
 it's because we are.*

We make our own food for our
 Kitchens as you would make at home and in
 our Farmshops we work with 130 local
 producers within 30 miles.



LOCAL & DELICIOUS

The Forest of Dean and Wye Valley has come to an age as a destination for discerning farm to fork enthusiasts.

Packed with friendly producers whose doors are open for visitors to come and sample their wares. Choose from cheese and cider picnics in an orchard, vegan baking courses and Welsh Cake gelato, the options are endless.

Be amazed at how much local produce that appears on menus is sourced nearby. We have market-gardens that grow organic fruit, vegetables and salads, and zingy farm fruit-juices. Then there's our smoked fish and home-reared meat from local farmers who work closely with traditional butchers, all of whom supply local hotels, restaurants and cafés.

TRY TOURS AND TASTINGS

at the award-winning Apple County Cider and Ty Gwyn Cider. If gin is more your thing visit Silver Circle Distillery, or for an award-winning wine Parva Farm Vineyard is a must.

SIP, SNACK, SNOOZE LYDNEY AND THE SEVERN

Start the day with coffee and sweet treats at Taurus Crafts near Lydney, where artisan businesses have gathered. Sip an espresso with a side order of award-winning chocolate from The Chocolate Bar.

When it's time to hit a savoury note head 20 mins up the River Severn estuary to Severn & Wye Smokery Barn for a mixed smoked platter for lunch which include the famous Severn & Wye smoked salmon.

Check in to a local B&B then head out for a pre-dinner stroll before dining close to 'home' at The Red Hart, Blaisdon on local Wild Boar sausages or opting for the vegan menu.

Go to visitdeanweye.co.uk for more 'sip, snack, snooze' ideas.

SPOT A DEER

Fallow deer are the principal species here, although roe and the delightful muntjac can also be seen. Only the males have antlers and they are called bucks. Come the spring they will shed them and grow new ones.

You may not see deer on your walk, but they are there hiding quietly in the woods waiting for you to pass by... if you're lucky and quiet you may just spot them.

At ONE With NATURE

The rich mixtures of woodland, meadows, cliffs, rivers, lakes and nature reserves are home to an abundance of wildlife and plants all year round.

SPRING DELIGHTS

Spring is a fabulous time to visit, with the brilliant green leaves of the new beech, while the bluebells, daffodils and wild garlic paint the ground with a spectacular carpet of colour. The orchards turn pink and white with apple, pear and plum



blossom, and you can literally smell May in the blackthorn and elder hedges. Among our villages there are many old orchards with rare fruit trees including the Blakeney pear, Blaisdon red plum and Severn bank apple.



LEAF PEEPERS WELCOME

The Forest of Dean and Wye Valley is quite simply one of the best places in the UK to enjoy the autumn pursuit of Leaf Peeping.



'Leaf Peeping' is a term growing in popularity from North America. It is all about strolling through autumn woodland and admiring the foliage as it turns from summer greens to the yellows, reds and golds of autumn.

With over 20 million trees spread across 200 square miles, the area is heaven for Leaf Peepers. Home to a wide variety of majestic oaks, ashes, birches, beeches, larches, sweet chestnuts and many more, the foliage lights up as the days start to draw in, creating an indulgent feast for the visual senses.

THE BEST VIEWS

May Hill is the best viewpoint to catch the best sunrises / sunsets in the Forest of Dean. It's one of the highest hills in the area with a prominent near circular mound and a crowning clump of trees which makes it easily to identify and find.

There are views from the top for many miles in all directions and on a clear day you can see up to 12 other counties! The trees atop May Hill were planted in 1887 (and replenished 1977) and have been recorded several times throughout history.

To discover our 'Leaf Peeping Drive' and full Leaf Peeping Guide, complete with leafy escapes, autumnal activities, forest feasts and more, go to www.visitdeanwye.co.uk



WELCOME TO THE WORLD OF 'STEPPING THROUGH film'



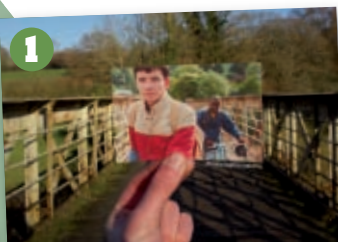
A place where all things film-related are explored through visiting the real locations where all of our favourite films were shot around the world. My name is Tom and film has been a huge passion of mine since I was small. It's led me to all sorts of wonderful places and it's been such a blast to follow in the footsteps of my on-screen heroes – both characters and actors alike! After watching everything from Mary Poppins to Star Wars, the feeling of standing where these classic scenes were born never gets old. The beauty of seeing

the invisible in the everyday makes each exploration exciting and every location unique. From New York to London, to the magical depths of Wales and its stunning scenery... the list of locations are endless and can be visited by anyone who wants to experience the same feelings of nostalgia, passion, and escapism that I do every single day. Puzzlewood, is a great starting point to see some cinematic delights.

Enjoy exploring to all those passionate enough to venture out into the unknown.

HAVE YOU WATCHED 'SEX EDUCATION' ON NETFLIX?

If not, why not? It's such a wonderful show full of laughs and life lessons and believe it or not. Here's a collection of just some of the scenes that you can visit as part of a little tour of the series:



1 Otis & Eric use this bridge quite often during the show to get about. It's beautifully placed with stunning hillsides surrounding it so certainly a #1 spot to visit.



2 Otis & Maeve shopping in the lovely little shop called Brown's Newsagents – a small Londis in reality! This location is used a lot in the show and is just a short drive from the bridge. Many characters end up visiting here and is slowly becoming quite the stop-off point for fans!



5 An emotional scene atop St Briavels Mount with Jackson & his adoptive mum, Sofia as they discuss life sitting on a bench – which is still in the same position. Once again, this location has such a beautiful view.



6 This location is of a scene so quick that you might blink and miss it. Anwar & Olivia are seen exiting a train at Parkend station during the night. This is a lovely location as the stop is quite idyllic with quaint village vibes.



3 In this scene we watch Otis and Maeve wonder along a pathway covered with over-arching trees lending to a beautiful location for some photoshoots!



4 The two characters in this scene are Jackson & Viv. They're seen walking along the Redbrook Bridge which, again, has a stunning view down towards the river and surrounding countryside.



7 The final location is of the iconic red chalet, home to Otis and his mother in the show. It's quite a sight to witness however the grounds are private so I'd suggest no poking around here!



A RICH HERITAGE



Our heritage is an important part of what makes this area so special.

A former royal hunting forest, the Dean has a long past as a source of timber for ships and building, coal, charcoal, iron ore, ochre and limestone. Archaeological studies have dated the earliest use of coal to Roman times. The area was inhabited well before that in Mesolithic times and there are even remains of megalithic monuments.

Many important sites have been preserved, from the pick axe marks on the walls at Clearwell Caves to the underground mine tours at Hopewell Colliery, the monuments to fallen miners in towns and in the forest, to the museums which tell their story such as the Dean Heritage Centre, to the old railway lines and bridges now cycle paths and footbridges and the Dean Forest Railway still running steam trains through the forest today.

KING OF THE CASTLES

Did you know that we have more castles per square mile than anywhere in the UK? Quite an incredible fact really considering how many castles the UK has!

There is a strong history of conflict and defence, as well as craftsmanship and religion. From Tintern Abbey to Goodrich Castle, Monnow Bridge to Offa's Dyke, the Wye Valley has a wealth of heritage to see and explore to this day. With its beauty it is easy to forget why some of these fortifications were built, but the arrow slits, cannons and dungeons remind us of their history too.

Visit visitdeanweye.co.uk to find out more about the area's history.



FEAST OF FESTIVALS

THE FOREST & WYE VALLEY OPEN STUDIOS

4-12 July 2020

This annual event showcases a range of creativity. An array of local artists opening up their studios to the public.

ABERGAVENNY FOOD FESTIVAL

19-20 September 2020

One of the highest profile food events in Britain, the festival delivers a delicious opportunity to explore and learn more about food.

FOREST SHOWCASE FOOD FESTIVAL

4 October 2020

Showcasing producers from the area, you will find a selection of local food, sweet treats and tipples to tempt your tastebuds, together with talks and demos, making this a lovely foodie family day out.

All year round there are events showcasing the talents of our local artists, musicians and food & drink producers.



COLEFORD MUSIC FESTIVAL

11 & 12 July 2020

The pretty market town will rock with revellers enjoying a packed programme of live performances. There's also a wide variety of workshops, exhibitions, stalls, demonstrations and street food.

A community event for the entire family.

Wye Valley River Festival: 2-17/5/20

Ross-on-Wye Beer and Cider Festival:
8-9/5/20

Hereford Food Festival: 13-14/6/20

Monmouth Music Festival: 25/7-2/8/20

Castell Roc, Chepstow Music Festival:
13-30/8/20

Newent Onion Fayre: 12/9/20

See our website for our What's On
Guide to all the events in the area.

A holiday at Whitemead Forest Park is a holiday to remember

Whether you're looking for an action packed break or just want to curl up and relax, at Whitemead you can do as much or as little as you like.

On-site facilities include

- Family friendly restaurant & bars
- Activity & FREE entertainment available
- FREE use of our on-site leisure facilities, pool, gym, sauna, steam room & spa pools.

Accommodation types to suit all

- Spacious Apartments
- Woodland Lodges
- Log Cabins with hot tubs
- Glamping Pods – with toilet & showers
- 16amp hook up pitches (both grass & hard standing available)

- Call 03301 230374
- Enquiries@whitemead.co.uk
- www.whitemead.co.uk

Parkend, Gloucestershire, GL15 4LA



whitemead
FOREST PARK



COSY BOLT HOLES, PEACEFUL RETREATS

A weekend away, a late break, a group adventure, or a solo stay - get away from it all and enjoy an experience you'll never forget.

A huge number of the accommodation providers here are dog friendly, many these days have hot tubs, there are village and town settings for those who like convenience, and hidden away countryside retreats for those who want complete solitude. There are riverside cottages and woodland log cabins, hotels with restaurants and home-from-home B&Bs.

You can hire shepherds' huts and wooden lodges, stay in luxury cottages with catering or book a mansion house and take the whole family. Stay on a farm, in a market town, up a hill or hire a campervan and explore the area. There really is something for everyone!

Mention the Visitor Guide when booking



**At *home*
in the forest**

Located on the edge of the Forest of Dean with views of the Wye Valley, our perfectly placed Bracelands campsite offers a wonderful campsite haven for all.

Call 024 7711 0181 or visit
campingintheforest.co.uk/bracelands

**CAMPING IN THE
FOREST** 
Your natural habitat



**BIG HOUSE
Holiday Lets**
in the Wye Valley & Forest of Dean



Big Houses for Large Groups

Save time trying to co-ordinate hotel rooms for big groups and book one of our large holiday homes in the Wye Valley & Forest of Dean.



With rooms full of character, fantastic amenities and set amid stunning scenery, create memorable moments with family and friends.

T: 01600 732050 E: enquiries@bhhl.co.uk
www.bhhl.co.uk

DEANFIELD




VB
★★★★
SILVER



Christine & Nigel Preest. Folly Road, Parkend GL15 4JF
T: 01594 562256 / 07788377795
E: deanfieldbb@aol.com www.deanfield.org.uk

First class, award winning accommodation set in the heart of the Forest of Dean. Backing onto RSPB's Nagshead Nature Reserve and surrounded by woodland walks & cycle trails, starting from our gate. Dean Forest Railway runs to this unspoilt village which has cycle hire, cafes and a post office. Deanfield overlooks the village green where cricket can be watched on a summers day, Parkend also boasts of excellent pubs with restaurants. Free WiFi and private enclosed parking for all guests. Cycle storage with washing facilities available. Highly rated and Certificate of Excellence on Trip Advisor. New for 2019: Visit England prestigious ROSE Award (Recognition Of Service Excellence).

Rooms: 1 Superking, 2 King, 3 Doubles, 2 Twin. All en-suite. Single occupancy available in all rooms. Rates: B&B £40 - £65 pppn

RUSHMERE FARM

VW ★★★★★





Crossways, Coleford, Glos. GL16 8QP
T: 01594 835319 M: 07917 353490
www.forestofdeancamping.co.uk

Family-run small site with horses, chickens and dogs. Super aspect. Good access to main A4136 Forest of Dean, Wye Valley and Coleford.

Electric hooks, new "log cabin" showers and toilets and washing-up room. Separate disabled/family shower. Open all year.

Rates: £8 pppn (£5 children under 14). Electricity £4 per night. Minimum £10 per pitch. Dogs free (limit 2 per family). No surcharges for Bank Holidays. Pitches: 48

GREENACRES CAMPSITE





Scowles Road, Coleford, Glos. GL16 8QS
T: 01594 837753 E: greenacres2@btinternet.com
www.greenacrescampsite.co.uk

Friendly, clean, quiet, family site in the Forest of Dean edging the Wye Valley.

Heated facilities, family/disabled room, laundry, washing up facilities.

New in 2020 – reception/café/shop

Hard-standing or grass pitches. EHU optional

Central to visitor attractions and activities

EDALE HOUSE B&B

Parkend, Lydney GL15 4JF T: 01594 562835
E: edalehouse@gmail.com
www.edalehouse.co.uk

Award Winning 4* accommodation in the centre of Parkend with a Steam Railway, pubs/restaurants. Bordering RSPB Nagshead. Cycle and Nature trails accessible from our garden! Residents lounge, Wood Burner, Bar, off road parking, Wifi, Secure Cycle Storage/Wash Area, Pets by arrangement.



THE SARACENS HEAD INN

Symonds Yat East HR9 6JL T: 01600 890435
E: contact@saracensheadinn.co.uk
www.saracensheadinn.co.uk

4* C17th riverside inn, on the east bank of the Wye. Relaxed ambience, real ales, fine food, riverside terraces, walks, ancient hand ferry crossing. Open all year, food served 12-2.30 & 6.30-9. Bar open 11.00 to 11.00 daily. Nine en-suite rooms, most overlooking the river. Can be let as single occupancy Sun-Thurs. Rates: B&B £55.00 - £89.00 pppn



WHITEHILL FARM COTTAGE

Wonastow, Monmouth NP25 4DW T: 01600 740253
E: info@whitehillfarmuk.com
www.whitehillfarmuk.com

Spacious 5 star luxury barn conversion in peaceful location with magnificent views. The ground floor including the twin bedded ensuite room is level for easy walking. The oak beams and sills are cut from our own tree. Private terrace overlooks the garden. Explore our working farm and woodland and see wild deer. 4 star B&B is also available in our C17th farmhouse.



COWSHED COTTAGE


Newland, Coleford GL16 8NR T: 01594 833259
E: eileenwood662@btinternet.com
www.cowshedcottage.co.uk

Guaranteed warm welcome at our converted single storey cottage overlooking a historic courtyard. Stunning views/ beautiful walks from your door. Two en-suite bedrooms. Full central heating. Enclosed garden, off- road parking. Secure bike storage. Short breaks, flexible arrivals. Free wifi. Sorry no pets.



2 DANBY COTTAGES

Yorkley, Nr Lydney GL15 4SL T: 0117 9422301
E: glawes@talktalk.net
www.danbycottages.co.uk

Pretty cottage deep in the forest, with three double bedrooms, living room with glass wall which opens onto large deck and substantial garden. Well equipped kitchen. Full central heating and two log burning stoves. Wonderful bird and wildlife spotting. Fully accessible for most wheelchair users. 



THE ROOST LUXURY GLAMPING

Mitcheldean GL17 0EE T: 01594 781779
E: stay@theroostglamping.co.uk
www.theroostglamping.co.uk

Two luxury cedar cabins set in 2.5 acres of woodland meadow. Kitchen, luxury bathroom, king size bed and wood burner. Outside, on the veranda, a Japanese hot tub and swinging love seat. Step into the meadow to your own private firepit.



STERRETT'S CARAVAN PARK

Symonds Yat West HR9 6BY T: 07751 022106
E: office@sterrettscaravanpark.com
www.sterrettscaravanpark.com

Easy access to well maintained, level grassy park. Hard standing or grass pitches. Electric hook-ups. Lodge and centrally heated static caravans for hire (booking essential).

Rates: Tents/Touring Van/Camper: From £10.00 p/p/n.
Child 4-15 years: £6.00 p/n. Electric Hook-up: £5 p/n
Static van: £290 - £440 p/w (6ppw). Lodge: £480 - £670 p/w (6ppw)
Pitches: 50. Touring: 8. 80 Privately Owned, 3 Static Holiday Caravans, 1 Lodge



FOREST AND WYE VALLEY CAMPING

St Briavels, Lydney GL15 6QU T: 01594 530777
E: forestandwyevalleycamping@gmail.com
www.forestandwyevalleycamping.co.uk

Situated in between the rugged beauty of Forest of Dean and the picturesque Wye Valley this family run caravan and camping site offers fantastic purpose built facilities. Heated shower block, hard standing pitches and all the services you expect are ready for you to plug into. Open 1st Apr to 1st Nov.
Rates: Pitch per night from £21. Pitches: 43



THE KING'S HEAD HOTEL

Ross on Wye HR9 5HL T: 01989 763174
E: enquiries@kingshead.co.uk
www.kingshead.co.uk



Town centre C14th hotel with original features, oak beams and stone fireplace. En-suite bedrooms, Free car park, Wi-Fi. Restaurant serves market fresh local produce. Local real ales.

THE HOLLIES

Worrall Hill, Lydbrook, Glos. GL17 9QF
T: 01594 368705
E: sid.phelps@phonecoop.coop

Budget yet clean, homely bungalow in the heart of the Forest. Sleeps 4 (+2), children very welcome and up to 2 dogs by arrangement. Ideal for families or group to use as a base.

SECRET ESCAPE TO THE FOREST

Coleford GL16 7NP T: 07879 621367
E: info@secretescapetotheforest.com
www.secretescapetotheforest.com

Bespoke shepherd huts, en-suite, steps away from the forest tracks and village pub. Hot tub available. Perfect for exploring the Forest of Dean and Wye Valley.

FOREST GATE

Huntley, Glos. GL19 3EU T: 01452 831192
E: forestgate@huntley-glos.co.uk
www.huntley-glos.co.uk

Small, rustic, country camping & caravan site in the grounds of Victorian Rectory. All facilities.
On bus routes.

© Published by Forest of Dean & Wye Valley Tourism.

Every care has been taken to ensure accuracy in this guide but Forest of Dean & Wye Valley Tourism and Morf Designs Ltd cannot accept any responsibility for any errors or omissions.

The inclusion of an establishment in this publication does not imply a recommendation and is accepted in good faith on the assumption it is accurate. Any accommodation complaints must be addressed to the owner.

Design and Project Management by Morf Designs Ltd www.morfdesigns.co.uk

This publication is printed on environmentally-friendly, totally chlorine-free paper with wood fibre from sustainable forests, using mineral/oil based environmentally-friendly ink.

All images subject to the photographers copyright conditions ©. Photography courtesy of: Inspire2adventure, Thomas Duke, Forest Blood (www.facebook.com/forestblood), Linda Wright, Gemma Wood, Alan Piper, Taurus Crafts, ICBP, David Broadbent Photography, Go Ape!, Mary Rose Young, Clint Randall Pixel Photography, Drew Buckley, Puzzlewood, Clearwell Caves, Greenacres Stables, Ben Locke, Severn & Wye Smokery, Gloucester Wildlife Trust, Telshawk Photography, Steve Hunt, Wye Valley & Forest of Dean Tourism, Forestry England



THE TOWNS

Small towns help make the Forest of Dean and Wye Valley a delight.

COLEFORD town centre houses many buildings of historic interest. Coleford boasts its very own cinema, two excellent golf courses, a nearby off-road driving centre, plus a good range of shops, restaurants, cafés and hotels.

Just outside the town are some superb family attractions, including Perrygrove Railway, Puzzlewood and Clearwell Caves.

LYDNEY has a range of leisure facilities and tourist attractions. Lydney Docks has recently been restored and is a great location for birdwatching. The popular Dean Forest Railway operates regular steam trains from Lydney. Taurus Crafts is situated just outside the town.

NEWENT town centre retains its old charm with shops and houses dating back many centuries. A number of medieval black and white buildings feature in the town including the old wooden Market House.

ROSS-ON-WYE is a small market town in the south of Herefordshire offering excellent places to stay, eat and shop. Set in beautiful countryside it's a great place for fresh air, walking and canoeing. Much of the town is a conservation area and at its heart is the historic Market House, a listed Ancient Monument, built of the Old Red Sandstone.

USK is a hidden gem in the county of Monmouthshire. An old Roman town, it sits on one of the finest salmon fishing rivers in the country, the River Usk. Its 11th century castle is the backdrop for an enchanting, romantic garden. It's the oldest town in Wales (circa 55 AD).

VOUCHERS



£10 OFF FAMILY RAFTING OPTION

based on 2 adults with 2 children in 2 canoes linked together

TICK WHEN USED

☐


£5 OFF

Full Day Bike Hire For Family Of Four

TICK WHEN USED

☐


£2 OFF A FAMILY TICKET

(Excludes Special Offers)

TICK WHEN USED

☐


£2.50 OFF A FAMILY TICKET

Not valid: for caving activities or special events, during Christmas Fantasy event, or with any other offer.

TICK WHEN USED

☐


£2 OFF A FAMILY TICKET

(Excludes Special Events.
Terms and conditions apply)

TICK WHEN USED

☐


£2 OFF A FAMILY TICKET

(Excludes Special Offers)
Not valid 1st-24th December

TICK WHEN USED

☐


£2 OFF A FAMILY TICKET

TICK WHEN USED

☐


£2 OFF

ALL MAZES FAMILY TICKET

TICK WHEN USED

☐


10% OFF LEISURE BIKES

(min. of 4 bikes - min. of 2 adult bikes)
Use code WVFDTA10 at checkout

TICK WHEN USED

☐


£1 OFF CLIMBING TOWER

(When combined with
Archery at Beenchenhurst)

TICK WHEN USED

☐


10% OFF

in Taurus Crafts Café and Gift Shop
(Exclusive of any other offer and
commission sales)

TICK WHEN USED

☐


10% DISCOUNT

IN THE MUSEUM SHOP
With this voucher
(excludes offers).

TICK WHEN USED

☐


10% OFF ALL ACTIVITIES

at Go Ape Forest of Dean.
Excl. Saturdays and Bank Holidays.
Use code FDWV20

TICK WHEN USED

☐


10% DISCOUNT

IN THE MUSEUM SHOP
With this voucher
(excludes offers).

TICK WHEN USED

☐


10% OFF ANY OUTDOOR ACTIVITY

Use voucher code '2020 Adventure's
to claim your discount online at
borderlandsoutdoor.com

TICK WHEN USED

☐


10% OFF SHORT BREAKS DURING 2020

Includes school holidays & Christmas.
Not to be used in conjunction with
another discount/offer.

TICK WHEN USED

☐


20% OFF PITCH FEE

Sunday - Thursday night. Not including
school holidays and bank holidays.

TICK WHEN USED

☐

Terms & Conditions: (Vouchers valid until end of March 2021)

- Original vouchers only - no photocopies
- Cheapest entry Free
- Not to be used in conjunction with any other offer
- Not exchangeable for cash
- T&Cs of Providers must be respected.
- Management has the right to refuse entry and withdraw offer

CHEPSTOW MUSEUM



Gwy House, Bridge Street, Chepstow, Mon. NP16 5EZ T: 01291 625981
E: chepstowmuseum@monmouthshire.gov.uk
Twitter: @Mon_Heritage Facebook: @MonLifeHeritageMuseums

Attractive displays focus on the history of Chepstow, the working life and leisure of its people. The everlasting appeal of Chepstow and the Wye Valley to artists and tourists alike is explored in a new 'Wye Tour' gallery opening for Gilpin2020 this year. Situated in an elegant 18th century house with a fascinating history that is also vividly recreated. Special exhibitions, activities and quizzes for children. Wheelchair access/toilet facilities. Parking opposite.

Open: Daily 11am-4pm (except Wednesdays, closed Dec 25-27 & Jan 1)

FREE
ADMISSION

CALDICOT CASTLE & COUNTRY PARK



Church Road, Caldicot NP26 4HU T: 01291 420241
E: caldicotcastle@monmouthshire.gov.uk
Facebook: /caldicotcastle

Caldicot Castle & Country Park was founded by the Normans, developed in royal hands as a stronghold in the Middle Ages and restored as a Victorian family home. The castle, which is within the idyllic wooded country park, has a romantic and colourful history. Visitors to the castle can explore its history, enjoy walks through the tranquil gardens and trails around the park and refreshments in the tea room.

Open: 6 days a week (except bank hols) 11.00am and 16:00pm Tues to Sun (holiday opening hours may vary)

FREE
ADMISSION

THE SHIRE HALL, MONMOUTH



Agincourt Square, Monmouth NP25 3DY T: 01600 775257
E: enquiries@shirehallmonmouth.org.uk
Facebook: /monmouthshirehall

A significant historic building in the Heart of Monmouth, South Wales. The Shire Hall in Agincourt Square, Monmouth, Wales, is a prominent Grade I listed building in the town centre. Built in 1724, the Shire Hall was formerly the centre for the Assize Courts and Quarter Sessions for Monmouthshire. In 1839/40, the court was the location of the trial of the Chartist leader John Frost and others for high treason for their part in the Newport Rising.

Open: 6 days a week (except bank hols) 10.00am and 16:00pm Mon to Sat (holiday opening hours may vary)

FREE
ADMISSION

THE OLD STATION, TINTERN



Tintern, Chepstow, Monmouthshire NP16 7NX T: 01291 689566
E: oldstationintern@monmouthshire.gov.uk
Facebook: /OldStationTintern

The Old Station, Tintern, nestles beside the River Wye in the heart of the Wye Valley. This idyllic 10-acre site boasts the best of what Monmouthshire has to offer; a varied selection of food from our cafe, family events and live music throughout the summer, a children's play area and zip wire and a great base for walks along the Wye Valley.

Open: Daily 10.30am - 17.30pm April - Sept / 10.00am - 14.00pm October. Closed November - March

FREE
ADMISSION

MONMOUTH MUSEUM



Priory Street, Monmouth, NP25 3XA. T: 01600 710630
E: nelsonmuseum@monmouthshire.gov.uk
Twitter: @Mon_Heritage Facebook: @MonLifeHeritageMuseums

Horatio Nelson was born in Norfolk, died at sea, and is buried in London, yet Monmouth is home to one of the World's prime collections of material about the famous admiral. Find out about his life, loves, death and commemoration through displays of original letters and documents, prints and paintings, weapons, ship models, glass, ceramics and books. The museum also deals with the area's history and includes a collection about Charles Rolls, co-founder of Rolls-Royce.

Open: Daily 11am-4pm (except Wednesdays, closed Dec 25-27 & Jan 1)

FREE
ADMISSION

Mae Treftadaeth BywydMynwy yn rheoli nifer o safleoedd ac actyniadau ar hyd lled Sir Fynwy: o'r cestyll i deithiau cerdded gwledig, mae rhywbeth ar gyfer pawb.

MonLife Heritage operates a number of sites and attractions throughout Monmouthshire; from castles to countryside walks, there is something for everyone.

www.monlife.co.uk/heritage

 **MonLife**
TREFTADAETH HERITAGE



Forestry England

**SPECTACULAR
VIEWS At
SYMONDS
YAT**



**FAMILY FUN At
BEECHENHURST**



**CYCLING At
CANNOP
CYCLE CENTRE**



**ADVENTURE
At MALLARDS
PIKE**



**Join
today**

As a member you'll be supporting the Forest of Dean and get free onsite parking, forest updates and discounts.

**forestryengland.uk/
membership**

**FOREST
OF DEAN**

Visit our website to
start your adventure
forestryengland.uk